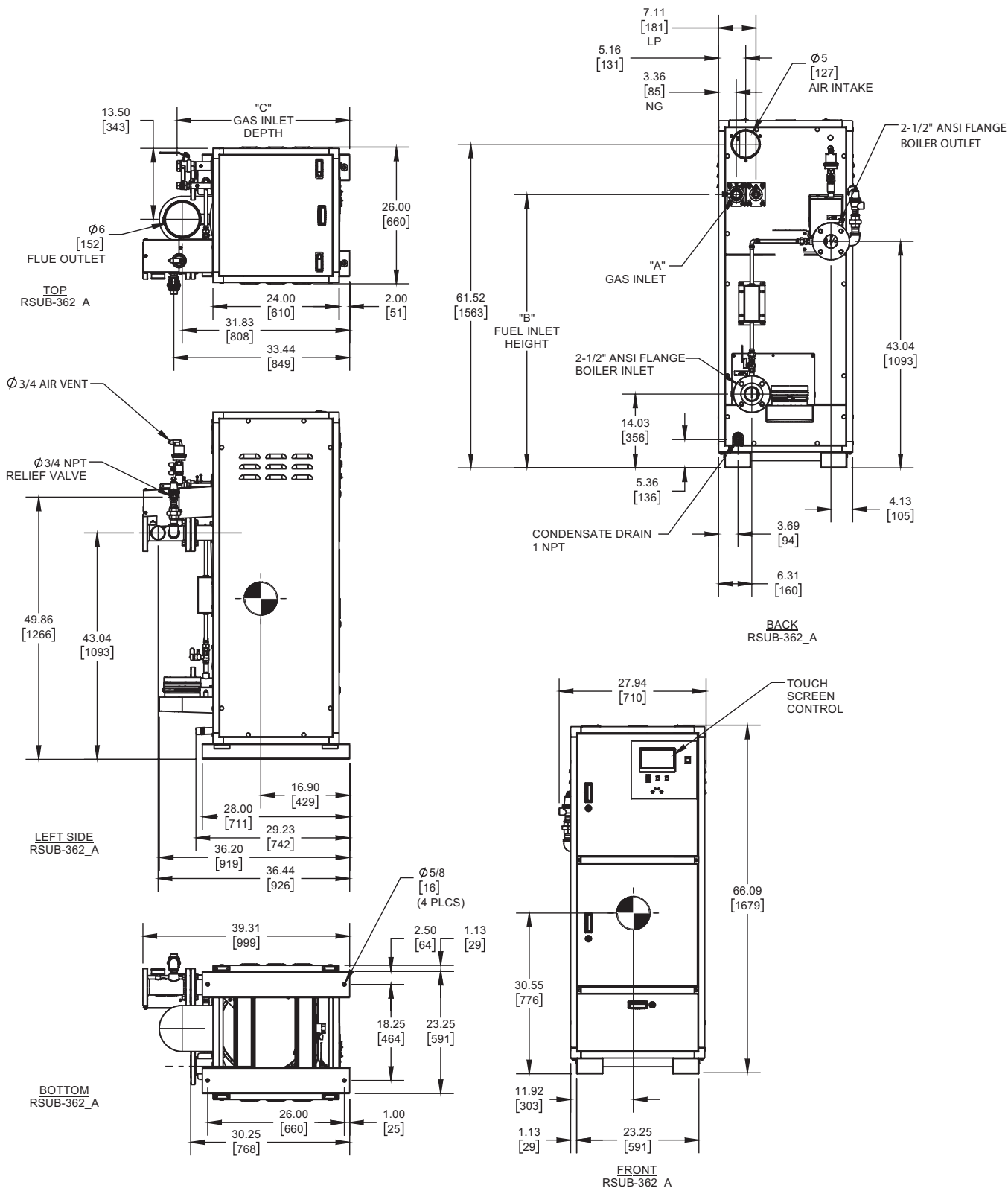


ENCORE 850 DUAL FUEL


Category II or Category IV Appliance
(see Installation and Operation Manual for venting information)

INDOOR UNIT



GAS OPTION	"A"	"B"	"C"
NG	1-1/4 NPT	51.96	32.83
LP	3/4 NPT	51.96	32.84

Notes:

1. Dimensions are approximate and should not be used to "rough-in" equipment.
2. Dimensions are subject to change without notice.
3. All dimensions are in inches [mm].
4.  Symbol indicates center of gravity.

BOILER CERTIFIED RATINGS & CAPACITIES

Fuel Type	Natural/Propane Gas	Boiler FLA	17.1 *
Input BTU/hr.	850,000 / 249 KW	Boiler HP	24.6
Output BTU/hr.	823,650 / 241 KW	Min. Gas Pressure Required	4" W.C.
Electrical Requirements	120 VAC/60 Hz/1PH (with neutral)	Max. Gas Pressure Allowed	14" W.C.
		Operating Weight	747 lbs. / 338.8 kg.

BOILER TRIM & CONTROLS

Main Gas Valve	Dungs MBC	Air Switch	Huba
Ignition Control	Fenwal	Flow Sensor	SIKA
Operating Control	HeatNet®	Blocked Flue Switch	Cleveland NS2
High Limit	Jumo	Blower Motor	Ametek
Relief Valve	3/4" x 3/4" set @ 50 psi	L.W.C.O.	800

A.S.M.E.

ASME Sect IV Fire Side Htg Surface	99.8 Sq. Ft. / 9.27 Sq. M.	Design Data	Max. 160 psig & 210°F
		Water Volume	16.4 gal. / 62.1 Liters
ASME Sect IV Water Side Htg Surface	127.87 Sq. Ft. / 11.88 Sq. M.		

* Add circulator amps.

BOILER TEMPERATURE RISE / PRESSURE DROP (Based on Full Input)

20°F / 11.1°C				30°F / 16.7°C				40°F / 22.2°C				50°F / 27.8°C				60°F / 33.3°C			
Flow Rate		Pressure Drop		Flow Rate		Pressure Drop		Flow Rate		Pressure Drop		Flow Rate		Pressure Drop		Flow Rate		Pressure Drop	
GPM	L/s	Ft	kPa	GPM	L/s	Ft	kPa	GPM	L/s	Ft	kPa	GPM	L/s	Ft	kPa	GPM	L/s	Ft	kPa
82.4	5.2	5.7	17.1	54.9	3.5	4.1	12.1	41.2	2.6	3.4	10.2	33.0	2.1	3.1	9.2	27.5	1.7	2.9	8.6

Flow GPM				Temp. Rise** (°F)				Vent Length (Equiv. Ft.)				Air Inlet Length (Equiv. Ft.)			
Min		Max		Min		Max		Min		Max		Min		Max	
27.5		82.4		20		100		6		100		0		100	

** Min/Max delta t reflects boiler operation at full input. For applications requiring operation above/below these parameters please consult factory.

REP FIRM	_____
SUBMITTED BY	_____
JOB NAME	_____
ARCHITECT	_____
ENGINEER	_____
CONTRACTOR	_____
DATE	_____

ENCORE 850 DUAL FUEL

Category II or Category IV Appliance
(see Installation and Operation Manual for venting information)

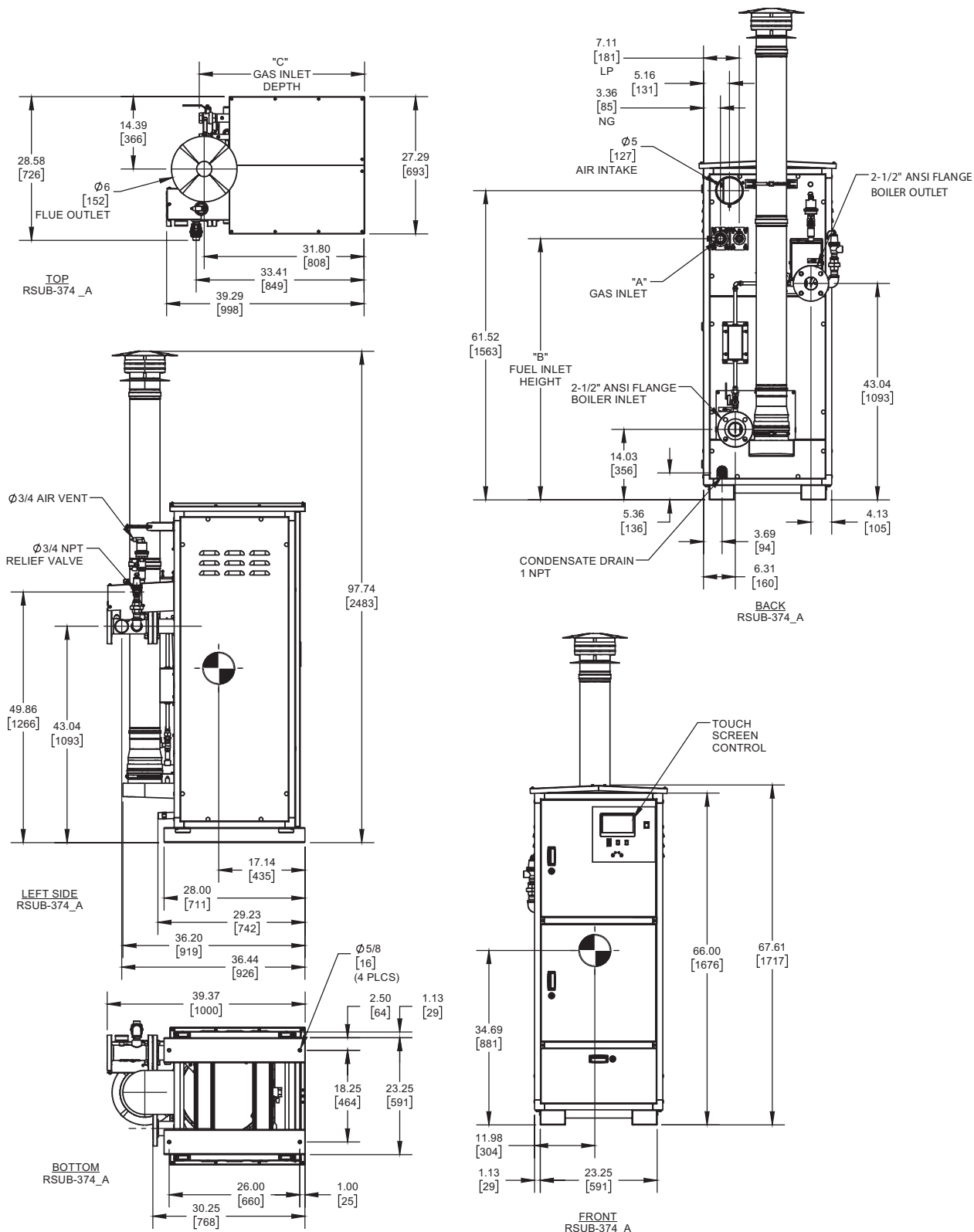


A Division of Mestek, Inc.
Westfield, MA 01085
(413) 564-5515

ENCORE 850 DUAL FUEL


Category II or Category IV Appliance
(see Installation and Operation Manual for venting information)

OUTDOOR UNIT



GAS OPTION	"A"	"B"	"C"
NG	1-1/4 NPT	51.95	32.83
LP	3/4 NPT	51.95	32.84

Notes:

1. Dimensions are approximate and should not be used to "rough-in" equipment.
2. Dimensions are subject to change without notice.
3. All dimensions are in inches (mm).
4.  Symbol indicates center of gravity.

BOILER CERTIFIED RATINGS & CAPACITIES

Fuel Type	Natural/Propane Gas	Boiler FLA	17.1 *
Input BTU/hr.	850,000 / 249 KW	Boiler HP	24.5
Output BTU/hr.	820,250 / 241 KW	Min. Gas Pressure Required	4" W.C.
Electrical Requirements	120 VAC/60 Hz/1PH (with neutral)	Max. Gas Pressure Allowed	14" W.C.
		Operating Weight	747 lbs. / 338.8 kg.

BOILER TRIM & CONTROLS

Main Gas Valve	Dungs MBC	Air Switch	Huba
Ignition Control	Fenwal	Flow Sensor	SIKA
Operating Control	HeatNet®	Blocked Flue Switch	Cleveland NS2
High Limit	Jumo	Blower Motor	Ametek
Relief Valve	3/4" x 3/4" set @ 50 psi	L.W.C.O.	800

A.S.M.E.

ASME Sect IV Fire Side Htg Surface	99.8 Sq. Ft. / 9.27 Sq. M.	Design Data	Max. 160 psig & 210°F
		Water Volume	16.4 gal. / 62.1 Liters
ASME Sect IV Water Side Htg Surface	127.87 Sq. Ft. / 11.88 Sq. M.		

* Add circulator amps.

BOILER TEMPERATURE RISE / PRESSURE DROP (Based on Full Input)

20°F / 11.1°C				30°F / 16.7°C				40°F / 22.2°C				50°F / 27.8°C				60°F / 33.3°C			
Flow Rate		Pressure Drop		Flow Rate		Pressure Drop		Flow Rate		Pressure Drop		Flow Rate		Pressure Drop		Flow Rate		Pressure Drop	
GPM	L/s	Ft	kPa	GPM	L/s	Ft	kPa	GPM	L/s	Ft	kPa	GPM	L/s	Ft	kPa	GPM	L/s	Ft	kPa
82.1	5.2	5.7	17.0	54.7	3.5	4.0	12.1	41.0	2.6	3.4	10.2	32.8	2.1	3.1	9.2	27.4	1.7	2.9	8.6

Flow GPM				Temp. Rise** (°F)				Vent Length (Equiv. Ft.)				Air Inlet Length (Equiv. Ft.)			
Min		Max		Min		Max		Min		Max		Min		Max	
27.4		82.1		20		100		6		100		0		100	

** Min/Max delta t reflects boiler operation at full input. For applications requiring operation above/below these parameters please consult factory.

REP FIRM	_____
SUBMITTED BY	_____
JOB NAME	_____
ARCHITECT	_____
ENGINEER	_____
CONTRACTOR	_____
DATE	_____

ENCORE 850 DUAL FUEL

Category II or Category IV Appliance
(see Installation and Operation Manual for venting information)



A Division of Mestek, Inc.
Westfield, MA 01085
(413) 564-5515